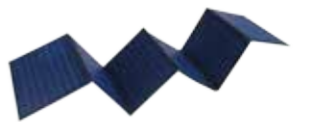
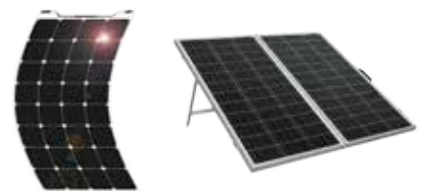


Shenzhen Eastar Energy Co.,Ltd



Contact:Nicola Zeng
Email:sales@eastarbattery.com
Whatspp:+86 151 1266 5131

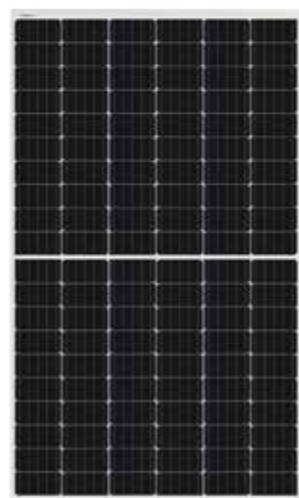
One-Stop Solution Of New energy

玻璃太阳能板

Glass solar panel

产品特点 Product features

- 组件可以承受雪压达5400Pa,
The module can withstand snow pressure up to 5400pa,
- 承受风压达2400Pa
Bearing wind pressure up to 2400pa
- 保证输出功率: 0~+5W
Guaranteed output power: 0 - + 5W
- 在弱光照条件下 (多云天气和清晨、傍晚) 具备高性能
High performance in low light conditions (cloudy weather, early morning and evening)
- 通过国际认证机构的独立认证
Independent certification by international certification bodies
- ISO9001、ISO14001、OHSAS18001
国际标准: 质量、环境、职业、健康和安全管理
ISO9001、ISO14001、OHSAS18001
International standard: quality, environment, occupation, health and safety management system

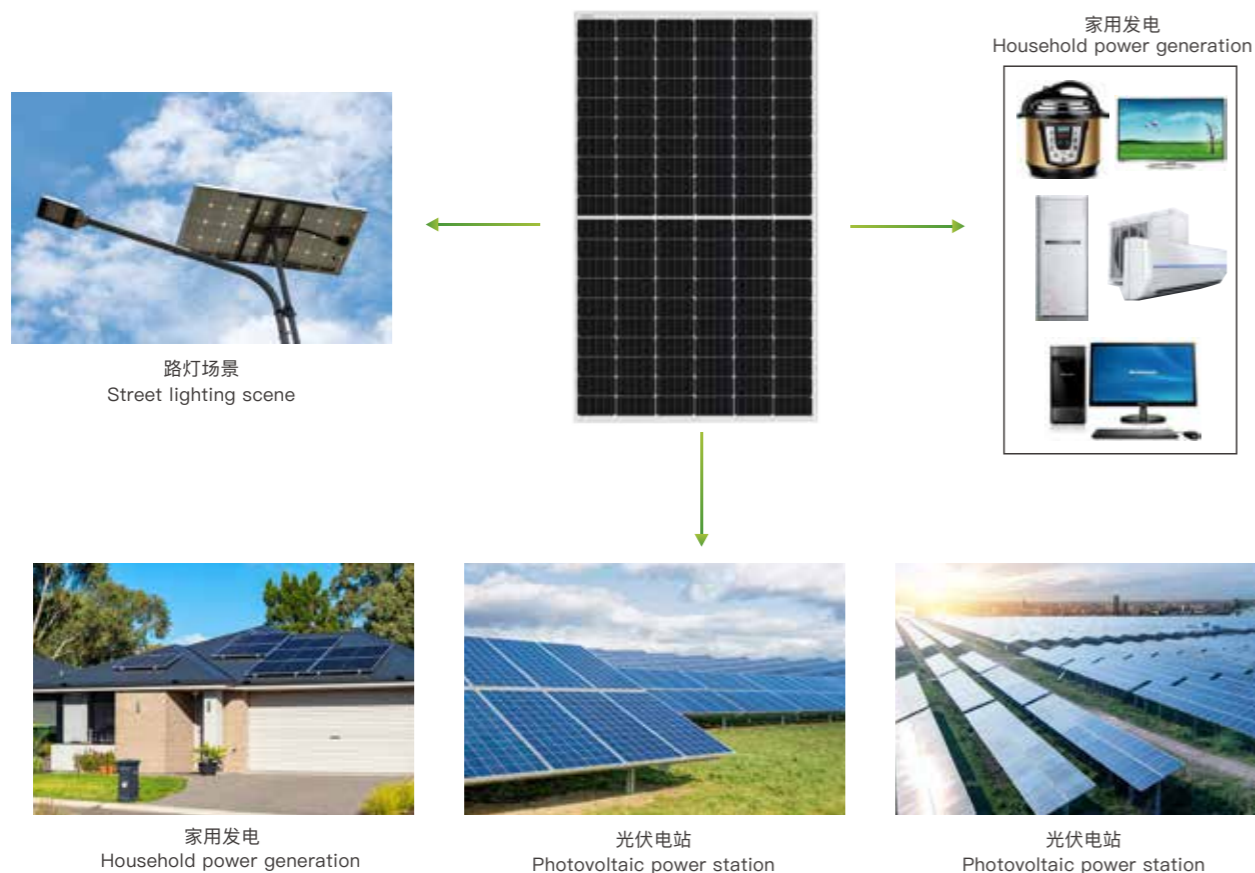


应用领域 application area

- 家用电器、办公设备、工农电动工具、电子通讯、网络传
Household appliances, office equipment, industrial and agricultural electric tools,
electronic communication, network transmission
输设备、车船设备、山头岛屿、油田钻井野外作业等。
Transportation equipment, vehicle and ship equipment, mountain island,
field operation of oilfield drilling rig, etc.
- 为离网太阳能发电系统提供稳定、安全、可靠的解决方案。
To provide a stable, safe and reliable solution for off grid solar power generation system.

系统应用简图

System application diagram



技术参数 technical parameter

型号 Model	SR-100M	SR-150M	SR-200M	SR-330M	SR-390M	SR-450M	SR-500M
峰值功率-Pmax(Wp) Peak power - Pmax (WP)	100W	150W	200W	330W	390W	450W	500W
工作电压-Vmp(V) Working voltage - VMP (V)	17.9V	18.1V	35.92V	33.35V	37.88V	41.90V	42.88V
工作电流-Imp(A) Working current - imp (a)	5.58A	8.28A	5.56A	9.89A	10.73A	11.28A	11.66A
开路电压-Voc(V) Open circuit voltage - V OC (V)	21.55V	21.6V	44.86V	37.18V	45.6V	46.9V	48.9V
短路电流-Isc(A) Short circuit current - I SC (a)	5.75A	8.51A	5.75A	10.11A	11.28A	11.68A	11.98A
电池片效率-(%) Cell efficiency-(%)	21.7%	21.7%	21.7%	21.9%	22%	22.3%	22.6%
模块效率 (%) Module efficiency (%)	20%	20%	20%	20.1%	20.2%	22.3%	22.4%
电池片数量 Number of cells	36(4x9)	36(4x9)	36(4x9)	60(6x10)	72(6x12)	144(12x12)	144(12x12)
模块尺寸 Module size	760*670*25	1180*670*30	1480*670*30	1640*992*35	1950*992*35	2108*1052*35	2108*1052*35
重量 weight	8kg	14kg	18kg	20kg	22kg	24kg	25kg
玻璃 Glass	3.2mm tempered glass 钢化玻璃						
框架 frame	Anodized aluminium alloy 阳极氧化铝						
接线盒 Junction box	waterproof type 防水						
连接器 Connector	Plug and socket						
输出电线 Output wire	PV 4.0mm ² ,0.9m						
适用温度 Applicable temperature	-40 to 85℃						
最大系统电压 Maximum system voltage	DC1000-1500V						
最大保险电流 Maximum safe current	15A						
功率偏差范围 Power deviation range	0~+3%						
电池片类型 Cell type	单面156.75*156.75 mm 或多面 156.75*156.75mm Mono156.75*156.75 mm or poly 156.75*156.75mm						
测试标准 STC:Irradiance 1000W/m ² ,Modules Temperature 25℃,AM=1.5							
Pmax温度系数 Temperature coefficient of Pmax	-0.47%/℃						
VOC温度系数 Temperature coefficient of VOC	-0.346%/℃						
ISC温度系数 Temperature coefficient of ISC	+0.036%/℃						

备注: 1.规格如有变更恕不另行通知; 2.特殊电压功率要求,可根据用户实际情况定做。

Remarks:

1. Specifications are subject to change without prior notice;
2. Special voltage and power requirements can be customized according to the actual situation of users.

单晶柔性板

Single crystal flexible plate

产品特点 Product features

- 轻薄可弯曲, 45度弯曲保护芯片
Light and flexible, 45 degree bending protection chip
- 光电转化高, 转化率约20%
High photoelectric conversion, conversion rate about 20%
- 插装容易, 厚度约3mm
It is easy to insert, and the thickness is about 3mm
- 瓦数越大, 续航历程越远, 可用多块并用
The larger the wattage is, the longer the endurance is. Multiple blocks can be used together
- 环保又美观即省电, 而且安全可靠
Environmental protection and beautiful, that is, power saving, and safe and reliable

应用领域 application area

- 适用于安装在船、卡车、户车顶部, 和其他有弧度的表面, 接线盒内置旁路二极管
It is suitable for installation on the top of ship, truck, household car and other vehicles with arc度的表面, 接线盒内置旁路二极管
The junction box has a built-in bypass diode
- 可以降低阴影遮挡引起的功率损失, 完全防水, 适合给铅酸电池和锂电池充电, 电压从5伏到100伏都可以制造。
It can reduce the power loss caused by shadow occlusion, and is completely waterproof, so it is suitable for lighting
Charging lead-acid and lithium batteries can be made from 5 to 100 volts.



系统应用简图

System application diagram



房车
Touring car



游艇
yacht



游艇
yacht



房车
Touring car

技术参数 technical parameter

型号 Model													
最大额定功率 (Pmax) Maximum rated power (Pmax)	100W	105W	110W	110W	115W	100W	105W	110W	230W	235W	240W	300W	310W
开路电压 (Voc) Open circuit voltage (VOC)	21.58V	22.13V	22.78V	23.96V	24.21V	21.58V	22.13V	22.78V	48.67V	48.82V	48.97V	64.61V	64.91V
最大电源电压 (Vmp) Maximum supply voltage (VMP)	18.47V	18.60V	18.72V	20.14V	20.33V	18.47V	18.60V	18.72V	40.6V	40.8V	41.04V	55.32V	55.62V
短路电流 (Isc) Short circuit current (ISC)	6.59A	6.76A	6.85A	6.42A	6.59A	6.59A	6.76A	6.85A	6.17A	6.20A	6.24A	5.82A	6.02A
最大功率电流 (Imp) Maximum power current (IMP)	5.41A	5.65A	5.87A	5.46A	5.65A	5.41A	5.65A	5.87A	5.66A	5.75A	5.84A	5.42A	5.57A
模块效率 Module efficiency	20%	21%	22%	22%	19.6%	20%	21%	22%	20.4%	20.88%	21.3%	20.2%	21.2%
功率容限 Power tolerance	0/+3	0/+3	0/+3	0/+3	0/+3	0/+3	0/+3	0/+3	0/+3	0/+3	0/+3	0/+3	0/+3
太阳能电池125*125mm Solar cell 125 * 125mm	32pcs cells		36 pcs cells		54 pcs cells		72 pcs cells		96 mono 125*125mm				
尺寸 size	1065*540*18mm		1200*540*18mm		1200*800*18mm		1580*800*18mm		1560*1050*18mm				
重量 weight	2.0kg		2.4kg		3.1 kg		4.5 kg		5.5kg				
填料配置 temperature characteristic	20pcs/box,12box/pallet ,2800pcs/20ft		20pcs/box,12box/pallet ,2300pcs/20ft		20pcs/box,12box/pallet ,1680pcs/20ft		20pcs/box,12box/pallet ,1320pcs/20ft		10pcs/box,12box/pallet ,1020pcs/20ft				
温度特性 Packing configuration													
标称模块工作温度 Nominal module operating temperature	45±2℃				Mechanical Load		Win: 1.2KPa; Snow:2.7KPa						
Isc温度系数 ISC temperature coefficient	0.065%/℃				Front Materials		Epoxy fiberglass board						
Voc温度系数 VOC temperature coefficient	-0.346%/℃				Cell Encapsulation		EVA (Ethylene-Vinyl-Acetate)						
工作温度 working temperature	-40 to 85℃				Junction Box		IP 67 rated						
最大系统电压 Maximum system voltage	500VDC				Connector		MC4						
串联保险丝额定值 Series fuse rating	15A				Cable		UV resistant PV cable 4mm2						

备注: 1.规格如有变更恕不另行通知; 2.特殊电压功率要求, 可根据用户实际情况定做。

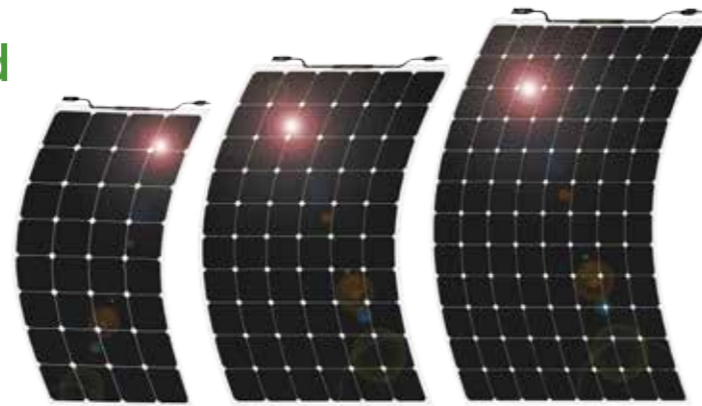
Remarks:

1. Specifications are subject to change without prior notice;
2. Special voltage and power requirements can be customized according to the actual situation of users.

SUNPOWER柔性板 SunPower flexible board

产品特点 Product features

- 轻薄可弯曲, 45度弯曲保护芯片
Light and flexible, 45 degree bending protection chip
- 光电转化高, 转化率约20%
High photoelectric conversion, conversion rate about 20%
- 插装容易, 厚度约3mm
It is easy to insert, and the thickness is about 3mm
- 瓦数越大, 续航历程越远, 可用多块并用
The larger the wattage is, the longer the endurance is. Multiple blocks can be used together
- 环保又美观即省电, 而且安全可靠
Environmental protection and beautiful, that is, power saving, and safe and reliable



应用领域 application area

- 适用于安装在船、卡车、户车顶部, 和其他有弧度的表面, 接线盒内置旁路二极管
It is suitable for installation on the top of ship, truck, household car and other vehicles with arc度的表面, 接线盒内置旁路二极管
The junction box has a built-in bypass diode
- 可以降低阴影遮挡引起的功率损失, 完全防水, 适合给铅酸电池和锂电池充电, 电压从5伏到100伏都可以制造。
It can reduce the power loss caused by shadow occlusion, and is completely waterproof, so it is suitable for lighting
Charging lead-acid and lithium batteries can be made from 5 to 100 volts.

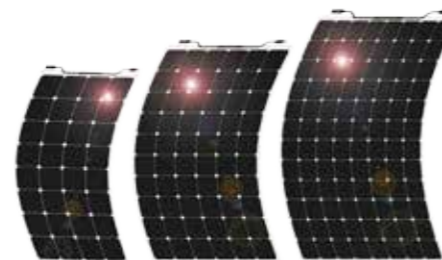
系统应用简图 System application diagram



路灯
street lamp



房车
Touring car



房车
Touring car



路灯
street lamp

技术参数 technical parameter

型号 Model																	
最大额定功率 (Pmax) Maximum rated power (Pmax)	95W	100W	105W	110W	115W	110W	115W	120W	125W	130W	160W	165W	170W	175W	180W	185W	
开路电压 (Voc) Open circuit voltage (VOC)	21.34V	21.58V	22.13V	22.78V	23.32V	23.96V	24.21V	24.48V	44.79V	25.12V	36.45V	36.69V	36.91V	37.12V	37.30V	37.47V	
最大电源电压 (Vmp) Maximum supply voltage (VMP)	18.32V	18.47V	18.60V	18.72V	18.9V	20.14V	20.33V	20.52V	20.77V	20.97V	30.23V	30.54V	30.78V	31.03V	31.29V	31.59V	
短路电流 (Isc) Short circuit current (ISC)	6.42A	6.59A	6.76A	6.85A	6.94A	6.42A	6.59A	6.75A	6.83A	6.91A	6.39A	6.52A	6.63A	6.74A	6.81A	6.93A	
最大功率电流 (Imp) Maximum power current (IMP)	5.18A	5.41A	5.65A	5.87A	6.08A	5.46A	5.65A	5.84A	6.01A	6.18A	5.29A	5.40A	5.52A	5.63A	5.75A	5.85A	
模块效率 Module efficiency	19%	20%	21%	22%	23%	19.6%	20.4%	21.33%	22.2%	23.1%	18.96%	19.55%	20.15%	20.74%	21.33%	21.90%	
功率容限 Power tolerance	0/+3	0/+3	0/+3	0/+3	0/+3	0/+3	0/+3	0/+3	0/+3	0/+3	0/+3	0/+3	0/+3	0/+3	0/+3	0/+3	
太阳能电池 Solar cell	32 mono 125*125mm					36 mono 125*125mm					96 mono 125*125mm						
尺寸 size	1065*540*18mm					1200*540*18mm					1200*800*18mm						
重量 weight	2.0kg					2.4kg					3.1 kg						
填料配置 Packing configuration	20pcs/box,12box/pallet , 2800pcs/20ft					20pcs/box,12box/pallet , 2300pcs/20ft					20pcs/box,12box/pallet , 1680pcs/20ft						
温度特性 temperature characteristic																	
标称模块工作温度 Nominal module operating temperature	45±2°C					Mechanical Load					Win: 1.2KPa; Snow:2.7KPa						
Isc温度系数 ISC temperature coefficient	0.065%/°C					Front Materials					Epoxy fiberglass board						
Voc温度系数 VOC temperature coefficient	-0.346%/°C					Cell Encapsulation					EVA (Ethylene-Vinyl-Acetate)						
Pmax温度系数 Pmax temperature coefficient	-0.46%/°C					Back Cover					PET/ETFE/composite material						
工作温度 working temperature	-40 to 85°C					Junction Box					IP 67 rated						
最大系统电压 Maximum system voltage	500VDC					Connector					MC4						
串联保险丝额定值 Series fuse rating	15A					Cable					UV resistant PV cable 4mm2						

备注: 1.规格如有变更恕不另行通知; 2.特殊电压功率要求, 可根据用户实际情况定做。

Remarks:

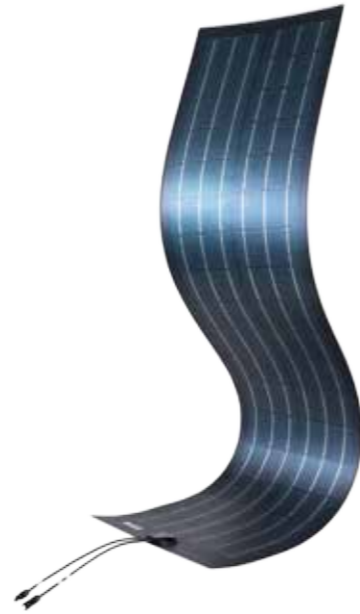
1. Specifications are subject to change without prior notice;
2. Special voltage and power requirements can be customized according to the actual situation of users.

GIGS柔性板

Gigs flexible board

产品特点 Product features

- 可靠性和安全性担保
Reliability and security guarantee
- 高功率密度，外形灵活
在CIGS fl-flexible form factor中记录效率水平
High power density and flexible appearance
Record the efficiency level in CIGS flexible form factor
- 安装重量轻，小于2.7 kg/m²
(<0.6磅/平方英尺)
Low installation weight, less than 2.7 kg / m²(< 0.6 psi)
- 无需贯穿件、压载物或支架适用于高风荷载、高地震危险区
No penetration, ballast or support required for high wind loads
High seismic risk area
- 5年工艺，10/25年断电保修
5-year process, 10 / 25 year power off warranty



应用领域 application area

- 家用电器、办公设备、工农电动工具、电子通讯、网络传输设备、车船设备等。
Household appliances, office equipment, industrial and agricultural electric tools, electronic communication, network transmission equipment, vehicle and ship equipment, etc.
- 为离网太阳能发电系统提供稳定、安全、可靠的解决方案。
Provide stable, safe and reliable solutions for solar power generation system.

系统应用简图

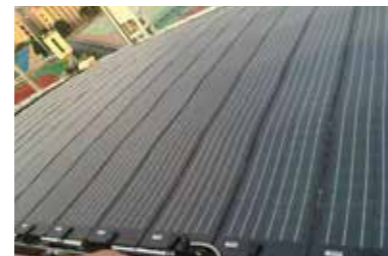
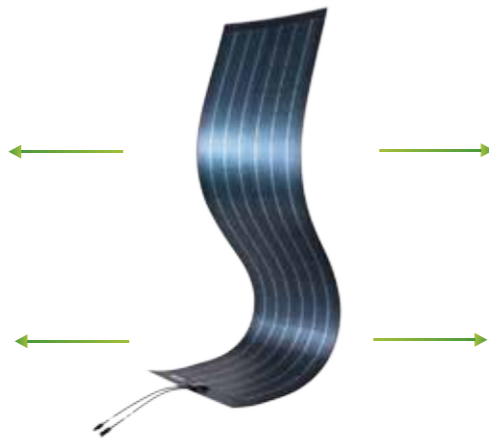
System application diagram



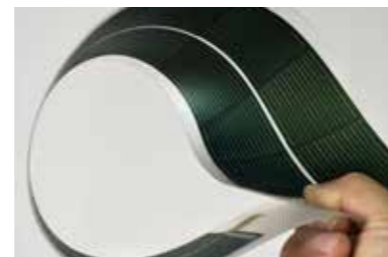
场外
outside



场外
outside



场外
outside



场外
outside

技术参数 technical parameter

型号 Model					
额定功率 Rated power	70W	75W	80W	85W	90W
孔径效率 Aperture efficiency	14.3%	15.3%	16.3%	17.3%	18.3%
功率输出公差 Power output tolerance	+5/-0	+5/-0	+5/-0	+5/-0	+5/-0
最大电源电压 Maximum supply voltage	18.1V	19.1V	20.0V	20.9V	21.8V
最大功率电流 Maximum power current	3.88A	3.95A	4.01A	4.07A	4.14A
开路电压 Open circuit voltage	23.2V	24.0V	24.7V	25.5V	26.3V
短路电流 short-circuit current	4.67A	4.60A	4.54A	4.47A	4.41A
最大串联保险丝额定值 Maximum series fuse rating	10A				
最大系统电压 Maximum system voltage	1000/1000				
物理和机械规范 Physical and mechanical specifications					
长度 length	1709毫米 (67.3英寸, 5英尺7.3英寸) 1709 mm (67.3 in, 5 ft 7.3 in)				
宽度 width	348毫米 (13.7英寸, 1英尺1.7英寸) 348 mm (13.7 in, 1 ft 1.7 in)				
厚度, J盒*处最大, 模块 Thickness, J Box * max, module	17 mm (0.7 in) , 2.5 mm (0.1 in)				
重量 (无粘合剂的模块) Weight (module without adhesive)	1.2 kg (2.6 lb)				
重量 (带粘合剂的模块) Weight (module with adhesive)	1.6 kg (3.5 lb)				
重量/面积 (无粘合剂的模块) Weight / area (module without adhesive)	2.0 kg/m ² (0.4磅/平方英尺) 2.0 kg/m ² (0.4 psi)				
重量/面积 (带粘合剂的模块) Weight / area (module with adhesive)	2.7 kg/m ² (0.6磅/平方英尺) 2.7 kg/m ² (0.6 psi)				
接线盒类型 Junction Box Type	IP68				
电缆连接 Cable connection	Helios H4 (S&F)				
单元格类型 Cell Type	二硒化铜镓锗 (CIGS) Copper indium gallium selenide (CIGS)				
保证 ensure	5年工艺; 10/25年输出功率 5 years of technology development; 10 / 25 years output power				
认证 authentication	UL 1703、IEC 61646、IEC 61730、cUL 1703、IEC 62716、IEC 61701 (盐雾) UL 1703、IEC 61646、IEC 61730、cUL 1703、IEC 62716、IEC 61701 (Salt Spray)				
包装信息 Packaging Info	每个板条箱10个模块, 每个托盘80个模块, 每个20'ISO集装箱1600个模块, 10 modules per crate, 80 modules per pallet, 1600 modules per pallet, 1 600 modules per 20' ISO container, 3520 modules per 40' ISO container				

备注: 1.规格如有变更恕不另行通知; 2.特殊电压功率要求,可根据用户实际情况定做。

Remarks:
1. Specifications are subject to change without prior notice;
2. Special voltage and power requirements can be customized according to the actual situation of users.

布艺折叠包 Fabric folding bag

产品特点 Product features

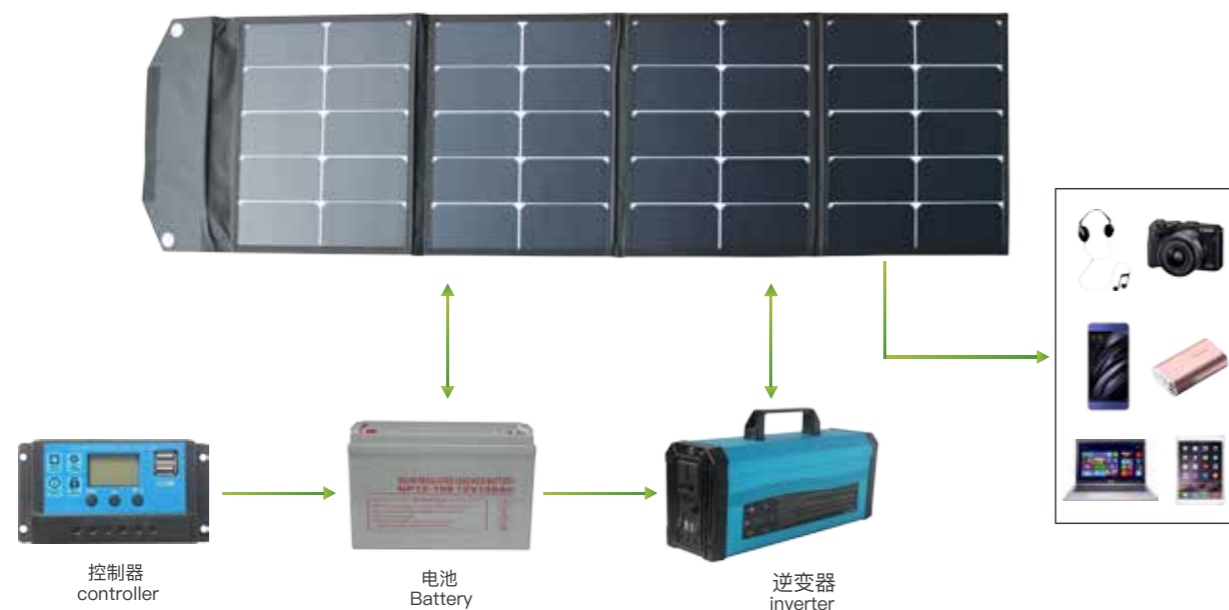
- 太阳能单晶硅具有优秀的弱光转化性能，发电效率高达21%
Solar monocrystalline silicon has excellent weak light conversion performance, Power generation efficiency up to 21%
- 轻巧便捷，户外轻松上阵，舒适提手
Light and convenient, easy to play outdoors, comfortable handle
- 双USB和单TYPE-C接口
Dual USB and single type-C interface
- PET磨砂面板，防水背板
Pet frosted panel, waterproof back panel
- 兼容多种设备，充你所带
Compatible with a variety of devices, fill your belt
- 优质材料，精工细作，结实耐用
High quality materials, fine workmanship, strong and durable



应用领域 application area

- 家用电器、办公设备、工农电动工具、电子通讯、网络传输设备、车船设备等。
Household appliances, office equipment, industrial and agricultural electric tools, electronic communication, network transmission equipment, vehicle and ship equipment, etc.
- 为离网太阳能发电系统提供稳定、安全、可靠的解决方案。
Provide stable, safe and reliable solutions for solar power generation system.

系统应用简图 System application diagram



技术参数 technical parameter

型号 Model	SRFS-15W	SRFS-21W	SRFS-28W	SRFS-40W	SRFS-60W	SRFS-100W	SRFS-120W	SRFS-150W	SRFS-200W	SRFS-250W	SRFS-300W	SRFS-400W
峰值功率-Pm(W) Peak power - PM (W)	15W	21W	28W	40W	60W	100W	120W	150W	200W	250W	300W	400W
开路电压-Voc(V) Open circuit voltage - VOC (V)	8.16V	8.16V	8.16V	24.5V	24.5V	21.8V	24.5V	21.8V	21.8V	21.8V	21.8V	21.8V
峰值电压-Vmp(V) Peak voltage - VMP (V)	6.96V	6.96V	6.96V	20.88V	20.88V	18.6V	20.88V	18.6V	18.6V	18.6V	18.6V	18.6V
峰值电流-Imp(A) Peak current - imp (a)	2.15A	3.02A	4.02A	1.92A	2.88A	5.38A	5.75A	8.06A	10.75A	13.4A	16.2A	21.5A
短路电流-Isc(A) Short circuit current - ISC (a)	2.38A	3.4A	4.34A	2.05A	3.12A	5.55A	5.92A	8.35A	10.98A	13.65A	16.43A	21.82A
电池片光电效率 Photoelectric efficiency of cell	23-27%											
折叠尺寸 mm Fold size mm	285*140*20	285*140*30	285*140*35	430*280*25	430*280*30	540*525*30	430*280*55	540*525*35	540*525*45	540*525*50	540*525*55	540*525*65
展开尺寸 mm Unfolding dimension mm	285*300*15	285*480*15	285*580*15	430*580*15	430*860*15	540*1060*15	870*860*15	540*1620*15	540*2170*15	540*2700*15	1100*1620*15	1100*2180*15
太阳能电池片 Solar cell	高效A级SUNPOWER电池片 High efficiency class a SunPower cell											
太阳能板表面封装(material) Solar panel surface packaging (material)	PET 或ETFE (贵寿命长) Pet or ETFE (expensive, long life)											
太阳能板底板材质(material) Material of solar panel bottom plate	TPE 或PCB底板 TPE or PCB board											
连接线/接头型号 Connecting wire / connector model	300D/600/ 褐灰色/军迷彩/黑色 300D / 600 / brown grey / Army camouflage / Black											
导线引出线拉力限值 Tension limit of lead out wire	150N											
应用等级 Application level	Class A											
额定工作温度 Rated operating temperature	48±2°C											
工作温度范围 Operating temperature range	-40°C~ +85°C											
电流温度系数TK Current temperature coefficient TK	0.1%/°C											
电压温度系数TK Voltage temperature coefficient TK	-0.37%/°C											
功率温度系数TK Power temperature coefficient TK	-0-45%/°C											
标准测试条件 Standard test conditions	Irradiance: 1000W/m2, Cell temperature: 25°C, AM: 1.5											

备注: 1.规格如有变更恕不另行通知; 2.特殊电压功率要求, 可根据用户实际情况定做。

Remarks:

1. Specifications are subject to change without prior notice;
2. Special voltage and power requirements can be customized according to the actual situation of users.

玻璃折叠板

Glass folding board

产品特点 Product features

- 支架45°角发电高，安装灵活，坚固耐用
Bracket 45° High power generation, flexible installation, strong and durable
- 单晶硅正A级电池片，焊接工整，效率高
Monocrystalline silicon is A-class battery, welding neat, high efficiency
- 钢化玻璃可承受高冲击力，高透光，抗高温
Tempered glass can withstand high impact, high light transmission and high temperature resistance
- IP65密封防水接线盒，防水，防氧化保护系数高
IP65 sealed waterproof junction box, waterproof, anti-oxidation, high protection coefficient
- 阳极氧化铝边框，耐腐蚀使用寿命长达25年以上
Anodized aluminum frame, corrosion resistance, service life of more than 25 years



应用领域 application area

- 家用电器、办公设备、工农电动工具、电子通讯、网络传输设备、车船设备等。
Household appliances, office equipment, industrial and agricultural electric tools, electronic communication, network transmission equipment, vehicle and ship equipment, etc.
- 为离网太阳能发电系统提供稳定、安全、可靠的解决方案。
Provide stable, safe and reliable solutions for solar power generation system.

系统应用简图

System application diagram



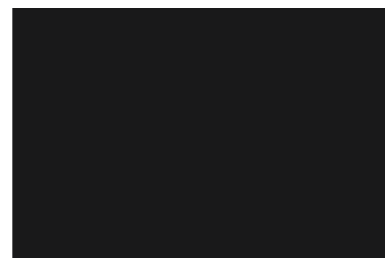
房车
Touring car



房车
Touring car



野外场景
Field scene



野外场景
Field scene

技术参数 technical parameter

型号 Model	SRFG-40W	SRFG-60W	SRFG-80W	SRFG-100W	SRFG-120W	SRFG-160W	SRFG-180W	SRFG-200W
峰值功率-Pm(W) Peak power - PM (W)	40W	60W	80W	100W	120W	160W	180W	200W
开路电压-Voc(V) Open circuit voltage - V OC (V)	21.8V	21.8V	21.8V	21.8V	21.8V	21.8V	21.8V	21.8V
峰值电压-Vmp(V) Peak voltage - Vmp(V)	18.1V	18.1V	18.1V	18.1V	18.1V	18.1V	18.1V	18.1V
峰值电流-Imp(A) Peak current imp (a)	2.2A	3.31A	4.42A	5.53A	6.63A	8.84A	9.94A	11.1A
短路电流-Isc(A) Short circuit current - I SC (a)	2.43A	3.55A	4.67A	5.75A	6.88A	9.04A	10.23A	11.37A
电池片光电效率 Photoelectric efficiency of cell	20-22%							
折叠尺寸 mm Fold size mm	385*345*34	535*345*40	625*345*50	670*410*50	670*525*50	870*505*60	760*670*60	1200*540*60
展开尺寸 mm Expansion dimension mm	385*690*17	535*395*20	625*690*25	670*820*25	670*1050*25	870*1010*30	760*1340*30	1200*1080*30
太阳能电池片 Solar cell	高效A级单晶/多晶电池片 High efficiency class a single crystal / polycrystalline cell							
太阳能板表面封装 (material) Solar panel surface packaging (material)	玻璃 Glass							
太阳能板底板材质(material) Material of solar panel bottom plate	TPE 或 PET TPE or PET							
连接线/接头型号Model Connector model	1平方毫米/长度1米/5.5*2.1MM/安德森/MC4 1 sq mm / length 1 m / 5.5 * 2.1 mm / Anderson / MC4							
边框 frame	铝合金边框 Aluminum alloy frame							
导线引出线拉力限值 Tension limit of lead out wire	150N							
额定工作温度 Rated operating temperature	48±2°C							
工作温度范围 Operating temperature range	-40°C- +85°C							
TK电流温度系数 Temperature coefficient of TK current	0.1%/°C							
TK电压温度系数 TK voltage temperature coefficient	-0.37%/°C							
TK功率温度系数 TK power temperature coefficient	-0-45%/°C							
标准测试条件 Standard test conditions	Irradiance: 1000W/m2, Cell temperature: 25°C, AM: 1.5							

备注: 1.规格如有变更恕不另行通知; 2.特殊电压功率要求,可根据用户实际情况定做。

Remarks:

1. Specifications are subject to change without prior notice;
2. Special voltage and power requirements can be customized according to the actual situation of users.

直流发电小系统

DC power generation system

产品特点 Product features

- 便携式设计,太阳能直流发电;
Portable design, solar DC power generation;
- 内置铅酸免维护电池,安全可靠;
Built in lead-acid maintenance free battery. Safe and reliable;
- 4路DC 12V及2路 USB 5V输出;
4-channel DC12V and 2-channel USB 5V output;
- 一拖四手机充电线,适合各类手机充电;
One drag four mobile phone charging lines, suitable for all kinds of mobile phone charging;
- 过载、过流、短路、高压及低压保护;
Overload, over current, short circuit, high voltage and low voltage protection;



应用领域 application area

- 家用休闲:手机、音响、收音机、MP3、MP4、5V电风扇、平板电脑、直流LED灯等;
Household leisure: mobile phone, audio, radio, MP3, MP4, 5V electric fan, tablet computer, DC LED light, etc;
- 郊外户外:游牧、露营、摆摊、垂钓、养殖等户外应急照明。
Outdoor: nomadic, camping, stalls, fishing, breeding and other outdoor emergency lighting.

系统应用简图

System application diagram



技术参数 technical parameter

型号 Model	SRSDC-5	SRSDC-10	SRSDC-20	SRSDC-40	SRSDC-60	SRSDC-60
太阳能板功率 Solar panel power	5W	10W	20W	40W	60W	80W
太阳能板电压 Solar panel voltage	5V	18V	18V	18V	18V	18V
太阳能板尺寸 Solar panel size	225*195*17	270*240*17	390*340*17	670*390*25	670*530*25	710*670*30
太阳能控制器 Solar controller	5V2A	18V2A	18V3A	18V5A	18V5A	18V10A
充电指示 charge indicator	25% 50% 75% 100%					
直流输出电压 DC output voltage	12V2A* 4pcs					
USB输出 USB output	5V2A* 2pcs					
锂电池容量 Lithium battery capacity	3.7V4.4AH	11.1V6.6AH	11.1V12AH	11.1V20AH	11.1V30AH	11.1V40AH
LED 灯 LED LED lamp LED	5V1W	12V2W	12V3W	12V3W	12V3W	12V3W
音乐播放 Music playing	收音机 FM radio / 蓝牙播放 Bluetooth / 3W-5W 喇叭 (选配 / options) Music Radio FM radio / Bluetooth / 3W ~ 5W speakers (optional / options)					
主机尺寸 Host size	160*100*32	198*124*25	160*110*140	180*120*140	200*120*160	220*140*180
内盒尺寸 Inner box size	250*202*68	350*180*70	180*120*170	200*140*170	220*140*190	220*140*190
外箱尺寸 Outer box size	425*270*360	370*380*370	500*380*360	420*300*360	450*300*390	500*330*430
装箱数量 Packing quantity	10	10	8	8	8	8
单套毛重 Gross weight of single set	1.6	4.3	6	7	8	9
储能温度 Energy storage temperature	-10°C ~ +45°C					
使用温度 Service temperature	-10°C ~ +65°C					

直流输出 DC output	电压 Voltage	(10V~15.5V)±0.2V
	电流 electric current	(0A~3A)±0.2A
	放电电量显示 Discharge power display	12.5V/100% 12V/75% 11V/50% 10.5V/25%
USB输出 USB output	保护 protect	过载/过流/短路/高压/低压 Overload / over current / short circuit / high voltage / low voltage
	电压 Protection voltage	5V
环境 environment	工作温度 working temperature	-10°C~40°C
	工作湿度 Working humidity	20%~90% 无凝露 20% ~ 90% no condensation
	储存温度 Storage temperature	-15°C~+60°C
	相对湿度 relative humidity	10%~90% 无凝露 10% ~ 90% no condensation

备注: 规格如有变更恕不另行通知。
Remarks: specifications are subject to change without prior notice

逆控一体+电池内置发电系统

Reverse control integrated + battery built-in power generation system

产品特点 Product features

- 内置免维护12V蓄电池4个，直流独立输出
220V 1路输出，互不干扰
Built in 4 maintenance free 12V batteries, DC independent output, 220V 1-way output, no interference with each other
- 有过充过放保护装置和过载保护、高温保护、
断路保护待功能。
It has over charge and over discharge protection device, overload protection, high temperature protection and open circuit protection.
- USB专用降压电机，完全适应使用锂电池手机等
数码产品充电
USB dedicated step-down motor, fully adapt to the use of lithium batteries, mobile phones and other digital products charging. otection.
- 智能LCD-体化显示,可实时查看设置参数及运行状况。
Intelligent LCD integrated display, real-time view of set parameters and operation status.



应用领域 application area

- 家用电器、办公设备、工农电动工具、电子通讯、网络传
Household appliances, office equipment, industrial and agricultural electric tools, electronic communication, network transmission
输设备、车船设备、山头岛屿、油田钻机野外作业等。
Transportation equipment, vehicle and ship equipment, mountain island, field operation of oilfield drilling rig, etc.
- 为离网太阳能发电系统提供稳定、安全、可靠的解决方案。
To provide a stable, safe and reliable solution for off grid solar power generation system.

系统应用简图

System application diagram



技术参数 technical parameter

型号 Model	SRL-8040	SRL-10065	SRL-200100	SRL-300150	SRL-400200	SRL-600400
交流输出功率 AC output power	300W	300W	500W	1000W	2000W	3000W
峰值输出功率 Peak output power	600W	600W	1000W	2000W	4000W	6000W
交流输出电压 AC output voltage	220V±10% 50HZ (可选 / options) 110V±10% 60HZ (2-4 pcs) 220V ± 10% 50 Hz (optional / options) 110 V ± 10% 60HZ (2-4 pcs)% 60HZ (2-4 pcs)					
交流输出电压 AC output voltage	逆变输出波形 Waveform 纯正弦波或修正波 Sine wave or Fixed wave Inverter output waveform Sine wave or fixed wave					
交流输出频率 AC output frequency	50HZ/60HZ					
电池容量 Battery capacity	40AH	65AH	100AH	150AH	200AH	400AH
电池电压 Battery voltage	铅酸电池或锂电池 Gel battery or lithium battery 11.1V or 12.8V (可选配 / options) Lead acid battery or lithium battery 11.1v or 12.8v (optional / options)					
太阳能板功率 Solar panel power	18V80W	18V100W	18V100W*2PCS	18V150W*2PCS	18V200W*2	18V150W*4PCS
太阳能充电 Solar charging	12V10A	12V10A	12V20A	12V30A	12V30A	12V40A
交流适配器充电 AC adapter charging	AC 220V/110V-14V5A (可选配多个同时充电更快速 / options) AC 220V / 110V ~ 14v5a (multiple charging at the same time / options)					
内置交流充电 AC adapter charging	AC 220V/110V (交流充电可选配功能 UPS / options) AC 220 V / 110 V (UPS / options for AC charging)					
直流输出 DC output	2 * 12V8A MAX					
USB输出 USB output	2 * 5V2.1A MAX					
LED照明灯 LED lighting	5W, 10W, 15W, 20W (选配 / options) 5W, 10W, 15W, 20W (options)					
音乐播放 Music playing	收音机 FM radio / 蓝牙播放 Bluetooth / 3W-5W 喇叭 (选配 / options) Radio FM radio / Bluetooth play Bluetooth / 3w-5w speaker (optional / options)					
储能温度 Energy storage temperature	-10°C ~ +45°C					
使用温度 Service temperature	-10°C ~ +65°C					
主机尺寸 Host size	400*220*340	450*220*340	450*220*380	580*220*360	620*280*360	620*280*360
重量 weight	30kg	32kg	60kg	70kg	110kg	150kg
通讯 (选配) Communication (optional)	RS485 / 手机APP(WIFI监控或GPRS监控) RS485 / mobile app (WiFi monitoring or GPRS monitoring)					
工作温度 working temperature	-10°C-60°C (高于45°降额使用) -10 ° C-60 ° C (above 45 ° Derating use)					
噪音 noise	≤60dB					
相对湿度 relative humidity	20%-95%(无凝露) 20% ~ 95% (no condensation)					
海拔高度 Altitude	2000m (>2000m需降额使用) 2000m (> 2000m needs derating)					
安装方式 Installation method	塔式 Tower style					
工作模式 Working mode	逆变优先/市电优先/节能模式 Inverter priority / utility priority / energy saving mode					
转换时间 Conversion time	≤4ms					
显示 display	LED+LCD					
散热方式 Heat dissipation mode	智能风扇控制 Intelligent fan control					
通讯功能(选配) Communication function (optional)	RS485 / 手机APP(WIFI监控或GPRS监控) RS485 communication interface / mobile app (WiFi monitoring or GPRS monitoring)					

备注：1. 规格如有变更恕不另行通知； 2. 特殊电压功率要求，可根据用户实际情况定做。

Remarks:
1. Specifications are subject to change without prior notice;
2. Special voltage and power requirements can be customized according to the actual situation of users.

兰色新款发电系统

Blue new generation system

产品特点 Product features

- 纯正正弦波、大容量78000mAh、多重保护、安全稳定
Pure sine wave, large capacity 78000mah, multiple protection Safety and stability
- 兼容各种家具用品, 支持不同电压的AC直流输出
Compatible with a variety of furniture supplies, support different voltage AC DC output
- 贴心小灯光设计, 照亮你的漆黑夜晚
Intimate small light design, light up your dark night
- LED显示, 可实时查看设置参数及运行状况;
LED display, real-time view setting parameters and operation status;
- 三种充电方式, 就是与众不同
There are three charging methods, which are different



应用领域 application area

- 家用电器、办公设备、工农电动工具、电子通讯、网络传输设备、车船设备、山头岛屿、油田钻机野外作业等。
Household appliances, office equipment, industrial and agricultural electric tools, electronic communication, network transmission equipment, vehicle and ship equipment, mountain island, field operation of oilfield drilling rig, etc.
- 为离网太阳能发电系统提供稳定、安全、可靠的解决方案。
To provide a stable, safe and reliable solution for off grid solar power generation system.

系统应用简图

System application diagram



技术参数 technical parameter

型号 Model	SRLM-4020	SRL-6030	SRL-8040	SRL-10065	SRL-200100	SRL-300150	SRL-400200	SRL-600400
交流输出功率 AC output power			300W	300W	500W	1000W	2000W	3000W
峰值输出功率 Peak output power			300W	300W	500W	1000W	2000W	3000W
交流输出电压 AC output voltage	直流/DC DC / DC	直流/DC DC / DC	220V±10% 50HZ (可选 / options) 110V±10% 60HZ (2-4 pcs) 220V 10% 50HZ (options) 110V 10% 60HZ (2-4 pcs)					
逆变输出波形 Inverter output waveform	纯正正弦波或修正波 Sine wave or Fixed wave							
交流输出频率 AC output frequency	50HZ/60HZ							
电池容量 Battery capacity	20AH	30AH	40AH	65AH	100AH	150AH	200AH	400AH
电池电压 Battery voltage	铅酸电池或锂电池 Gel battery or lithium battery 11.1V or 12.8V (可选配 / options) Lead acid battery or lithium battery 11.1v or 12.8v (optional / options)							
太阳能板功率 Solar panel power	18V40W	18V60W	18V80W	18V100W	18V100W*2PCS	18V150W*2PCS	18V200W*2	18V150W*4PCS
太阳能充电 Solar charging	12V10A	12V10A	12V10A	12V10A	12V20A	12V30A	12V30A	12V40A
交流适配器充电 AC adapter charging	AC 220V/110V-14V5A (可选配多个同时充电更快速 / options) AC adapter charging AC 220V / 110V ~ 14v5a							
内置交流充电 Built in AC charging	AC 220V/110V (交流充电可选配功能 UPS / options) AC 220 V / 110 V (UPS / options for AC charging)							
直流输出 DC output	2 * 12V8A MAX							
USB输出 USB output	2 * 5V2.1A MAX							
LED照明灯 LED lighting	5W, 10W, 15W, 20W (选配 / options) 5W, 10W, 15W, 20W / options							
音乐播放 Music playing	收音机 FM radio / 蓝牙播放 Bluetooth / 3W-5W 喇叭 (选配 / options) FM radio / Bluetooth / 3W ~ 5W speakers (optional / options)							
储能温度 Energy storage temperature	-10°C ~ +45°C							
使用温度 Service temperature	-10°C ~ +65°C							
主机尺寸 Host size	305*165*220	305*165*220	305*165*220	305*165*220	420*210*340	480*210*380	480*280*380	480*280*380
重量 weight	10kg	13kg	18kg	25kg	35kg	47kg	60kg	80kg
散热方式 Heat dissipation mode	智能风扇控制 Intelligent fan control							

备注: 1.规格如有变更恕不另行通知; 2.特殊电压功率要求, 可根据用户实际情况定做。

Remarks:

1. Specifications are subject to change without prior notice;
2. Special voltage and power requirements can be customized according to the actual situation of users.

橙色新款发电系统 Orange new generation system

产品特点 Product features

- 纯正弦波、大容量78000mAh、多重保护、安全稳定
Pure sine wave, large capacity 78000mah, multiple protection Safety and stability
- 兼容各种家具用品, 支持不同电压的AC直流输出
Compatible with a variety of furniture supplies, support different voltage AC DC output
- 贴心小灯光设计, 照亮你的漆黑夜晚
Intimate small light design, light up your dark night
- LED显示, 可实时查看设置参数及运行状况;
LED display, real-time view setting parameters and operation status;
- 三种充电方式, 就是与众不同
There are three charging methods, which are different



应用领域 application area

- 家用电器、办公设备、工农电动工具、电子通讯、网络传输设备、车船设备、山头岛屿、油田钻机野外作业等。
Household appliances, office equipment, industrial and agricultural electric tools, electronic communication, network transmission equipment, vehicle and ship equipment, mountain island, field operation of oilfield drilling rig, etc.
- 为离网太阳能发电系统提供稳定、安全、可靠的解决方案。
To provide a stable, safe and reliable solution for off grid solar power generation system.

系统应用简图 System application field



技术参数 technical parameter

型号 Model	SRL-8040	SRL-10065	SRL-200100	SRL-300150	SRL-400200	SRL-600400
交流输出功率 AC output power	300W	300W	500W	1000W	2000W	3000W
峰值输出功率 Peak output power	600W	600W	1000W	2000W	4000W	6000W
交流输出电压 AC output voltage	220V±10% 50HZ (可选 / options) 110V±10% 60HZ (2-4 pcs) 220V 10% 50HZ (options) 110V 10% 60HZ (2-4 pcs)					
逆变输出波形 Inverter output waveform	纯正弦波或修正波 Sine wave or Fixed wave					
交流输出频率 AC output frequency	50HZ/60HZ					
交流输出频率 AC output frequency	40AH	65AH	100AH	150AH	200AH	400AH
电池电压 Battery voltage						
太阳能板功率 Solar panel power	18V80W	18V100W	18V100W*2PCS	18V150W*2PCS	18V200W*2	18V150W*4PCS
太阳能充电 Solar charging	12V10A	12V10A	12V20A	12V30A	12V30A	12V40A
交流适配器充电 AC adapter charging						
内置交流充电 Built in AC charging	AC 220V/110V (交流充电可选配功能 UPS / options)					
直流输出 DC output	2 * 12V8A MAX					
USB输出 USB output	2 * 5V2.1A MAX					
LED照明灯 LED lighting	5W, 10W, 15W, 20W (选配 / options)					
音乐播放 Music playing	收音机 FM radio / 蓝牙播放 Bluetooth / 3W-5W 喇叭 (选配 / options)					
储能温度 Energy storage temperature	-10°C ~ +45°C					
使用温度 Service temperature	-10°C ~ +65°C					
主机尺寸 Host size	420*210*340	420*210*340	420*210*340	480*210*380	480*280*380	480*280*380
重量 weight	18kg	25kg	35kg	47kg	60kg	80kg
散热方式 Heat dissipation mode	智能风扇控制 Intelligent fan control					

备注: 1. 规格如有变更恕不另行通知; 2. 特殊电压功率要求, 可根据用户实际情况定做。
Remarks:
1. Specifications are subject to change without prior notice;
2. Special voltage and power requirements can be customized according to the actual situation of users.

S系列铝壳便携储能发电机 S series aluminum shell portable energy storage generator

产品特点 Product features

- 专用微处理芯片设计。设备运算速度更快。更稳定;
Design of special microprocessor chip. The device is faster. More stable;
- LCD显示, 可实时查看设置参数及运行状况;
LCD display, real-time view set parameters and operation status;
- 具备四种工作模式可调(市电, 行车, 发电机, 太阳能充电)
Four working modes can be adjusted (power supply, driving, generator, solar charging)
- 完善的全方位自动保护功能, 性能稳定, 可靠;
Perfect all-round automatic protection function, stable and reliable performance;
- 兼容性强, 满足多种设备需求
Strong compatibility, meet the needs of a variety of devices
- 国际插孔用途广泛, 触电保护门设计, 防止不慎金属物插入触电。
The international jack is widely used, and the design of the fuse protection door can prevent the metal from being inserted into the electric shock



应用领域 application area

- 家用电器、办公设备、工农电动工具、电子通讯、网络传
Household appliances, office equipment, industrial and agricultural electric tools, electronic communication, network transmission
输设备、车船设备、山头岛屿、油田钻机野外作业等。
Transportation equipment, vehicle and ship equipment, mountain island, field operation of oilfield drilling rig, etc.
- 为离网太阳能发电系统提供稳定、安全、可靠的解决方案。
To provide a stable, safe and reliable solution for off grid solar power generation system.

系统应用简图 System application diagram



技术参数 technical parameter

型号 Model	SRYG-1000	SRYG-1500	SRYG-2000	SRYG-2500	SRYG-3000	SRYG-3500	SRYG-4000	SRYG-4500	SRYG-5000
交流输出功率 AC output power	1000W	1000W/1500W/2000W			2000W/2500W			3000W	
峰值输出功率 Peak output power	2000W	2000W/3000W/4000W			4000W/5000W			6000W	
交流输出电压 AC output voltage	220V±10% 50HZ (可选 / options) 110V±10% 60HZ (2-4 pcs) 220V 10% 50HZ (options) 110V 10% 60HZ (2-4 pcs)								
逆变输出波形 Inverter output waveform	纯正弦波 Pure sine wave								
交流输出频率 AC output frequency	50HZ/60HZ								
电池容量 Battery capacity	1000WH	1500WH	2000WH	2500WH	3000WH	3500WH	4000WH	4500WH	5000WH
锂电池电压 Lithium battery voltage	25.6V-29.6V (可选配 / options) 25.6v ~ 29.6v (optional / options)								
太阳能充电 Solar charging	PWM 24V20A (33-46V最大700瓦) PWM 24v20a (33-46v, 700W max)			PWM 24V30A (33-46V最大1000瓦) PWM 24v30a (33-46v, 1000W max)			PWM 24V50A (33-46V最大1800瓦) PWM 24v50a (33-46v 1800 w max)		
交流适配器充电 AC adapter charging	AC 220V/110V~29.6V5A (可选配多个同时充电更快速 / options) AC 220V / 110V ~ 29.6v5a (multiple charging at the same time / options)								
内置交流充电 Built in AC charging	AC 220V/110V (交流充电可选配功能 UPS / options) AC 220 V / 110 V (UPS / options for AC charging)								
车充输出 Car charging output	12V10A 最大120瓦 / max 120W 12v10a Max 120W / max 120W								
直流输出 DC output	2 * 12V8A MAX								
USB输出 USB output	2 * 5V2.1A MAX								
QC 3.0输出 QC 3.0 output	5V/3A, 9V/2A, 12V/1.5A								
Type-C输出 Type-C output	PD 60W, 5V/3A, 9V/3A, 12V/3A, 15V/3A, 20V/3A								
无线充电输出 Wireless charging output	2 * 5V10W MAX								
LED照明灯柱 LED lighting column	5W, 10W, 15W, 20W (选配 / options)								
音乐播放 Music playing	收音机 FM radio / 蓝牙播放 Bluetooth / 3W-5W 喇叭 (选配 / options) FM radio / Bluetooth / 3W ~ 5W speakers (optional / options)								
语音控制操作 Voice control operation	用语音控制各部分功能的开关机 (选配 / options) Switch on and off of various functions controlled by voice (optional / options)								
储能温度 Energy storage temperature	-10℃ ~ +45℃								
使用温度 Energy storage temperature	-10℃ ~ +65℃								
长宽高 length, width and height	384*249*290	384*249*290	384*249*340	384*249*381	384*249*420	384*249*450	384*249*500	384*249*540	384*249*600
重量 weight	14kg	16kg	14kg	20kg	22g	24kg	26kg	28kg	30kg

备注: 1. 规格如有变更恕不另行通知; 2. 特殊电压功率要求, 可根据用户实际情况定做。

Remarks:

1. Specifications are subject to change without prior notice;
2. Special voltage and power requirements can be customized according to the actual situation of users.

A系列铝壳便携储能发电机

A series aluminum shell portable energy storage generator

产品特点 Product features

- 专用微处理芯片设计。设备运算速度更快。更稳定；
Design of special microprocessor chip. The device is faster. More stable;
- LCD显示，可实时查看设置参数及运行状况；
LCD display, real-time view set parameters and operation status;
- 汽车级锂电池电芯，内置汽车级电芯，不虚标，循环使用时间长，搭配预警智能芯片，多重安全保护。
Automotive grade lithium battery cell, built-in automotive grade cell, no virtual label, it has a long recycling time and is equipped with early warning smart chip, Multiple security protection.
- 完善的全方位自动保护功能，性能稳定，可靠；
Perfect all-round automatic protection function, stable and reliable performance;
- 贴心LED小灯光设计，照亮你的漆黑夜晚
Intimate led small light design, illuminate your dark night



应用领域 application area

- 家用电器、办公设备、工农电动工具、电子通讯、网络传输设备、车船设备、山头岛屿、油田钻机野外作业等。
Household appliances, office equipment, industrial and agricultural electric tools, electronic communication, network transmission equipment, vehicle and ship equipment, mountain island, field operation of oilfield drilling rig, etc.
- 为离网太阳能发电系统提供稳定、安全、可靠的解决方案。
To provide a stable, safe and reliable solution for off grid solar power generation system.

系统应用简图

System application diagram



技术参数 technical parameter

型号 Model	SRYG-200A	SRYG-400A	SRYG-600A	SRYG-1000A	SRYG-1500A	SRYG-2000A	SRYG-2500A
交流输出功率 AC output power	200W	400W	600W	1000W	1500W	2000W	2000W
交流输出功率 AC output power	400W	800W	1200W	2000W	3000W	4000W	4000W
交流输出电压 AC output voltage	220V±10% 50HZ (可选 / options) 110V±10% 60HZ (2-4 pcs) 220V 10% 50HZ (options) 110V 10% 60HZ (2-4 pcs)						
逆变输出波形 Inverter output waveform	纯正弦波或修正波 sine wave / Fixed wave						
交流输出频率 AC output frequency	50HZ/60HZ						
电池容量 Battery capacity	200WH	400WH	600WH	1000WH	1500WH	2000WH	2500WH
锂电池电压 Lithium battery voltage	25.6V-29.6V (可选配 / options) 25.6v ~ 29.6v (optional / options)						
太阳能充电 Solar charging	PWM 24V10A-30A						
交流适配器充电 AC adapter charging	AC 220V/110V-29.4V5A (可选配多个同时充电更快速 / options) AC 220V / 110V ~ 29.4v5a (multiple charging at the same time / options)						
内置交流充电 Built in AC charging	AC 220V/110V (交流充电可选配功能 UPS / options) AC 220 V / 110 V (UPS / options for AC charging)						
车充输出 Car charging output	12V10A 最大 120 瓦 / max 120W 12v10a Max 120W / max 120W						
直流输出 DC output	2 * 12V8A MAX						
USB 输出 USB output	2 * 5V2.1A MAX						
QC 3.0 输出 QC 3.0 output	5V/3A, 9V/2A, 12V/1.5A						
Type-C 输出 Type-C output	PD 60W, 5V/3A, 9V/3A, 12V/3A, 15V/3A, 20V/3A						
无线充电输出 Wireless charging output	2 * 5V10W MAX (选配 / options)						
LED 照明灯柱 LED lighting column	5W (选配 / options)						
音乐播放 Music playing	收音机 FM radio / 蓝牙播放 Bluetooth / 3W-5W 喇叭 (选配 / options) FM radio / Bluetooth / 3W ~ 5W speakers (optional / options)						
语音控制操作 Voice control operation	用语音控制各部分功能的开关机 (选配 / options) Switch on and off of various functions controlled by voice (optional / options)						
UPS	(选配 / options)						
储能温度 Energy storage temperature	-10℃ ~ +45℃						
使用温度 Service temperature	-10℃ ~ +65℃						
长宽高 length, width and height	217*100*176	300*100*176	280*170*270	320*170*270	320*170*270	420*170*270	460*170*270
重量 weight	3kg	4.5kg	18kg	20kg	22kg	24kg	26kg

备注: 1.规格如有变更恕不另行通知; 2.特殊电压功率要求,可根据用户实际情况定做。

Remarks:

1. Specifications are subject to change without prior notice;
2. Special voltage and power requirements can be customized according to the actual situation of users.

L系列200-300-500-1000W 便携储能系统 L series 200-300-500-1000w Portable energy storage system

产品特点 Product features

- 专用微处理芯片设计。设备运算速度更快。更稳定；
Design of special microprocessor chip. The device is faster. More stable;
- 市电充电电流0-30A可调，用户电池容量配置更灵活；
The charging current of commercial power is adjustable from 0 to 30a, and the user's battery capacity configuration is more flexible;
- 具备三种工作模式可调（市电，发电机，太阳能充电）
Adjustable three working modes (utility, generator, solar charging)
- 完善的全方位自动保护功能，性能稳定，可靠；
Perfect all-round automatic protection function, stable and reliable performance;
- 侧面有散热功能，减少产品长时间运营而受到的损害
The side has heat dissipation function to reduce the damage caused by long-term operation of the product

应用领域 application area

- 家用电器、办公设备、工农电动工具、电子通讯、网络传
Household appliances, office equipment, industrial and agricultural electric tools, electronic communication, network transmission
- 输设备、车船设备、山头岛屿、油田钻机野外作业等。
Transportation equipment, vehicle and ship equipment, mountain island, field operation of oilfield drilling rig, etc.
- 为离网太阳能发电系统提供稳定、安全、可靠的解决方案。
To provide a stable, safe and reliable solution for off grid solar power generation system.



系统应用简图 System application diagram



技术参数 technical parameter

型号 Model	SRYG-200	SRYG-300	SRYG-500	SRYG-500	SRYG-1000	SRYG-1500	SRYG-2000
交流输出功率 AC output power	200W	300W	500W	500W	1000W	1500W	2000W
峰值输出功率 Peak output power	400W	600W	1000W	1000W	2000W	3000W	4000W
交流输出电压 AC output voltage	220V±10% 50HZ (可选 / options) 110V±10% 60HZ (1-3 pcs)						
逆变输出波形 Inverter output waveform	纯正弦波或修正波 Pure sine wave or modified wave						
交流输出频率 AC output frequency	50HZ/60HZ						
电池容量 Battery capacity	200WH	300WH	500WH	500WH	1000WH	1500WH	2000WH
锂电池电压 Lithium battery voltage	25.6V-29.6V (可选配 / options)						
太阳能充电 Solar charging	3A	5A	5A	5A	20A	20A	20A
交流适配器充电 AC adapter charging	AC 220V/110V-11.1V/22.2V 3-5A (可选配多个同时充电更快速 / options) AC 220V/110V-11.1V/22.2V 3-5A (multiple charging at the same time is optional / options)						
车充输出 Car charging output	12V10A 最大120瓦 / max 120W						
直流输出 DC output	2 * 12V8A MAX						
USB输出 USB output	2 * 5V2.1A MAX						
QC 3.0输出 QC 3.0 output	5V/3A, 9V/2A, 12V/1.5A						
Type-C输出 Type-C output	PD 60W, 5V/3A, 9V/3A, 12V/3A, 15V/3A, 20V/3A						
LED照明灯柱 LED lighting column	5W (选配 / options)						
储能温度 Energy storage temperature	-10°C ~ +45°C						
使用温度 Service temperature	-10°C ~ +65°C						
长宽高 L*W*H mm	105*105*210	255*230*140	290*120*200	290*159*158	320*230*260	320*230*280	320*230*320
重量 weight	2.8kg	3.5kg	4.6kg	7kg	14kg	17.5kg	21.5kg
噪音 noise	≤55dB						
海拔高度 Altitude	2000m(超过需降额使用) 2000m (more than required derating)						
相对湿度 relative humidity	0%-95%, 无凝露/No condensation						

备注: 1.规格如有变更恕不另行通知; 2.特殊电压功率要求,可根据用户实际情况定做。

Remarks:

1. Specifications are subject to change without prior notice;

2. Special voltage and power requirements can be customized according to the actual situation of users.